

Globalworth Office Park

Bucharest, Romania



ELCO boilers enhance top Romanian business destination's green credentials.

Globalworth Campus is the largest office park in Romania, featuring three highly technical and environmentally friendly Class "A" office towers. It is establishing itself as a top business destination in Romania, one of Bucharest's largest conference centres and a dedicated commercial area.

The challenge

Globalworth Campus is the biggest Class "A" office complex in Romania and includes three A-class office buildings housing extensive office spaces, retail outlets and various other facilities spanning a rentable area of over 92,000m². The park was built to offer a complete work experience.

Comment

By utilising the low water content technology in the ELCO boilers, the compact and lightweight units were able to meet the demanding requirements of this complex commercial installation. Also, the energy-saving performance of the solution implemented for the Globalworth Office Buildings Park provided customer satisfaction. This project will become a reference case for energy saving transformation in the office sector.

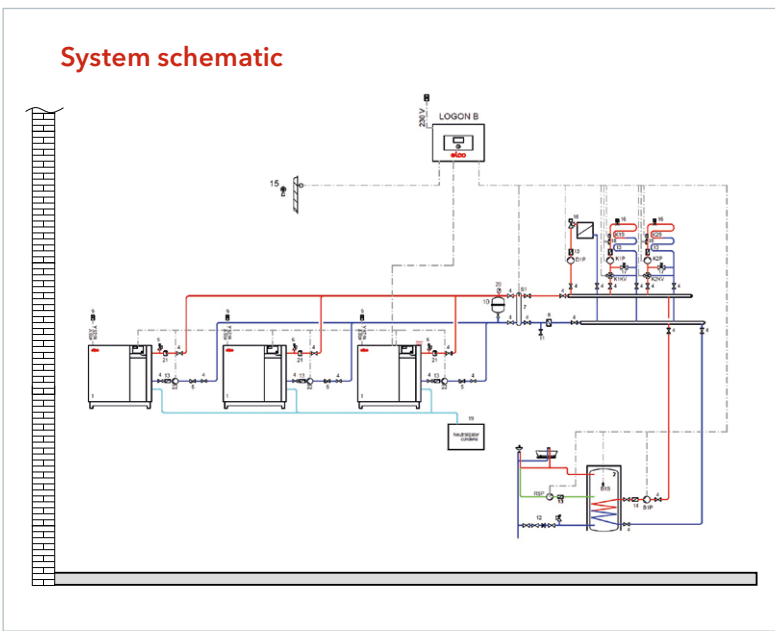
Featured products:

TRIGON® XXLSE 850



TRIGON® XXL condensing boilers offer top performance and can reach outputs up to 2 MW, thanks to a unique design. When mounted in cascade, the TRIGON® XXL boilers can reach a total output of 32 MW.

- ▶ High efficiency & low emissions
- ▶ Compact size and powerful output power
- ▶ Unique heat exchanger with HEX³ geometry for class leading NOx and CO emissions
- ▶ Robust stainless steel heat exchanger



The plant scheme:

- ▶ 3 x TRIGON® XXL SE 850 and 4 x R3605 (installed in cascade)
- ▶ Top model with low emissions
- ▶ Designed for complex systems
- ▶ Optimised solutions for every project

The ELCO solution

Special design

TRIGON® XXL offers an unmatched power and performance ratio, delivering outputs of up to 2 MW, thanks to its unique design.

Extremely low emissions

By combining a unique heat exchanger geometry with a water-cooled cold flame burner, TRIGON® XXL offers a high performance class for low NOx and CO emissions.

Modular construction

ELCO's modular construction allows the TRIGON® XXL to be disassembled into its component parts, providing flexibility on site.

Benefits

TRIGON® XXL SE 850

<p>70 litre</p> <p>Low water content boiler</p>	<p>23 mg/kWh*</p> <p>Extremely low NOx emissions (EN15502)</p>	<p>103%**</p> <p>Annual efficiency (NNG 40/30°C)</p>
--	---	---

* (EN15502)

** (In accordance with Equation 2 in the Non-Domestic Building Services Compliance Guide)