

TYPE: New Build | SECTOR: Industry

Altex Logistic Centre

Bucharest, Romania



ELCO meets logistics centre's heating demands quickly and efficiently.

Altex Romania, one of the largest companies in the Romanian retail market, has invested 37 million Euros in developing a new logistics centre near Bucharest. Located on a plot of land measuring 15.2 ha, it comprises two main storage buildings measuring 90,000m², alongside 46,000m² of external logistics platforms. The new logistics centre accommodates a wide range of products, from large household appliances to IT components and accessories.

The challenge

To deliver the high heating outputs across such a large site required the specification of powerful boilers. They also needed to deliver the highest levels of efficiency to reflect the new state-of-the-art logistics centre. As a result, the four floor standing units from ELCO's commercial range were installed in cascade, delivering a combined output of 5,500kW across the two logistics halls.

Comment

Altex Logistic Park needed a carefully designed, high quality heating system. ELCO's solution was developed to meet the highest demands, while offering the greatest possible economy, maximum flexibility and reduced emissions.

Featured products:

TRIGON® XXLSE



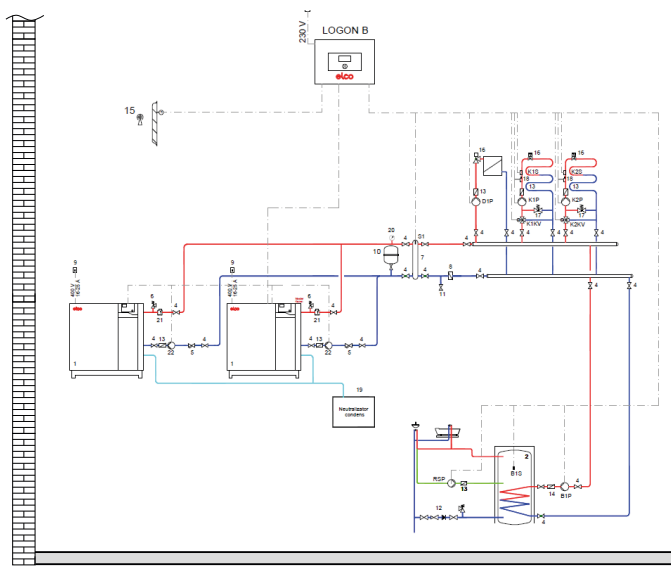
TRIGON® XXLSE – Class-leading outputs with extremely low emissions.

The TRIGON® XXL offers unrivalled power and performance, delivering outputs up to 2 MW, thanks to a one-of-a-kind boiler design.

- ▶ High efficiency
- ▶ High modulation range
- ▶ Extremely low emissions
- ▶ Stainless steel HEX
- ▶ Modular construction
- ▶ Up to 2 MW in a single unit
- ▶ Compact dimensions



System schematic



The ELCO solution

Low water technology

TRIGON® XXL boilers are fast and respond quickly - even in complex installations when combined with other heat sources.

Special design

TRIGON® XXL offers an unmatched power and performance ratio, delivering outputs of up to 2 MW, thanks to its unique design.

Extremely low emissions

By combining a unique heat exchanger geometry with a water-cooled cold flame burner, TRIGON® XXL offers a high performance class for low NOx and CO emissions.

Modular construction

ELCO's modular construction allows the TRIGON® XXL to be disassembled into its component parts, providing flexibility on site.

The plant scheme

- ▶ 1 x TRIGON® XXL SE 1300
- ▶ 1 x TRIGON® XXL SE 850
- ▶ 2 x R3409
- ▶ Top model with low emissions
- ▶ Designed for complex systems
- ▶ Optimised solutions for every project

Benefits

TRIGON® XXL SE 1300

<div style="border: 2px solid red; border-radius: 50%; width: 100px; height: 100px; margin: 0 auto; display: flex; flex-direction: column; align-items: center; justify-content: center;"> <div style="font-size: 24px; font-weight: bold; color: red;">97</div> <div style="font-size: 12px; font-weight: bold; color: red;">litre</div> <div style="font-size: 10px; color: gray;">Low water content boiler</div> </div>	<div style="border: 2px solid red; border-radius: 50%; width: 100px; height: 100px; margin: 0 auto; display: flex; flex-direction: column; align-items: center; justify-content: center;"> <div style="font-size: 24px; font-weight: bold; color: red;">23</div> <div style="font-size: 12px; font-weight: bold; color: red;">mg/kWh*</div> <div style="font-size: 10px; color: gray;">Extremely low NOx emissions (EN15502)</div> </div>	<div style="border: 2px solid red; border-radius: 50%; width: 100px; height: 100px; margin: 0 auto; display: flex; flex-direction: column; align-items: center; justify-content: center;"> <div style="font-size: 24px; font-weight: bold; color: red;">103.3%**</div> <div style="font-size: 10px; color: gray;">Annual efficiency (NNG 40/30°C)</div> </div>
--	---	--

* (EN15502)

** (In accordance with Equation 2 in the Non-Domestic Building Services Compliance Guide)